



CEDRE Information Day

Paul A. Schuler

11 March 2010

Paris, France

www.cleancaribbean.org

CCA Area of Interest

Caribbean, Latin America and Western Hemisphere



Primary Area of Responsibility



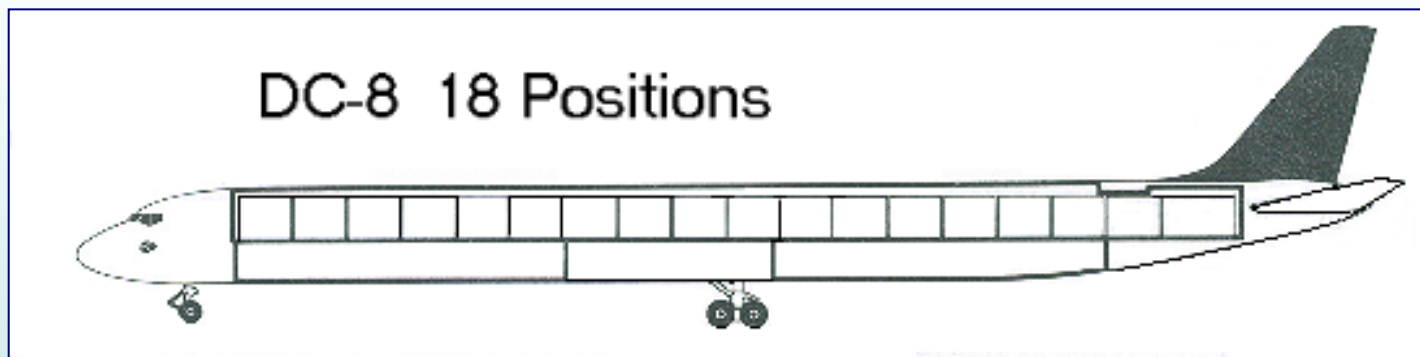
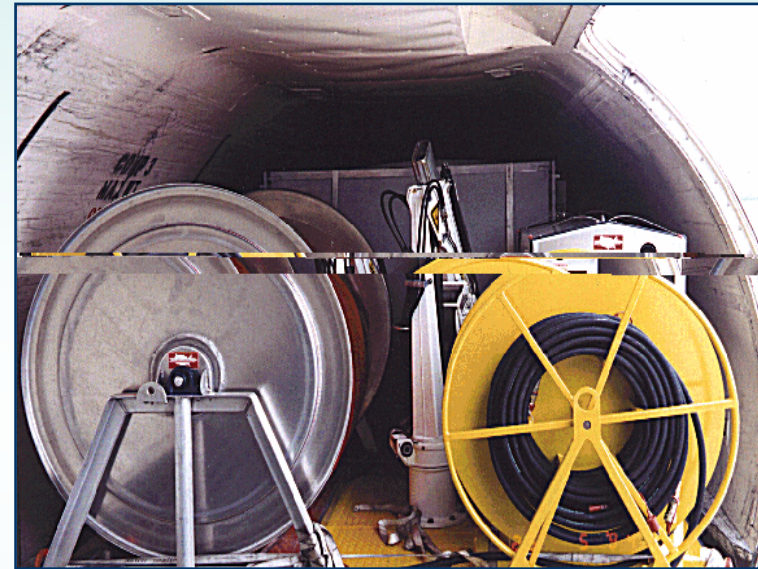
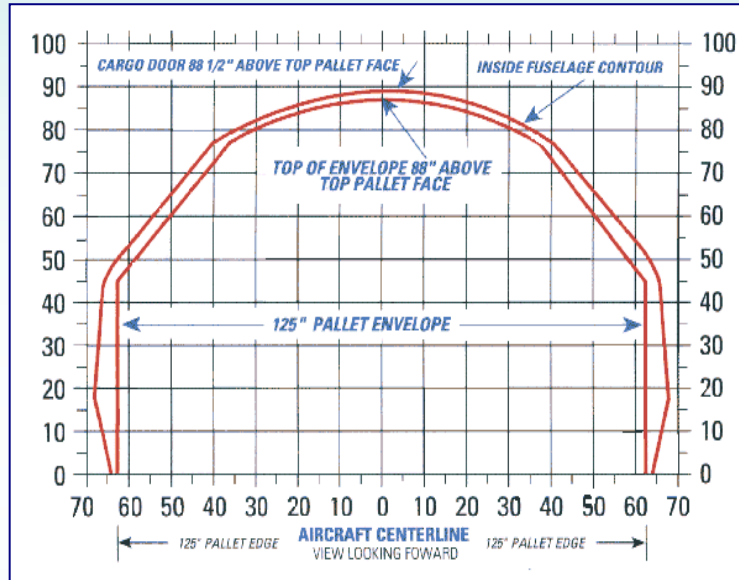
Dispersant Area (since 1998)

Grounding of chemical tanker "SICHEM OSPREY" in Clipperton – 10/02/10



Air Mobility Concept

B727, DC-8, B757



Strategically Located Base



Logistics Planning



Database

Airports, Seaports

Response Spectrum

Crude Oil & Refined Products: Light through Very Heavy Oils (API Groups II, III, IV, V Oils)

Petro Chemicals: Crude Derivatives only and that behave like oil

Environment: Tropical to Cold Water

Off Shore, Near Shore, On Shore, Land

Equipment Capabilities

Capacidad de Equipos

Chemical Dispersion

In-Situ Burning

Containment & Protection

Mechanical Recovery

Temporary Storage

Shoreline Clean-up

Telecommunications

Wildlife Rehabilitation

Dispersión Química

Quéma en sitio

Contención y Protección

Recuperación Mecánicos

Almacenamiento Temporal

Limpieza de las Costas

Telecomunicaciones

Rehabilitacion Natural

Airborne Dispersant Application System



In-situ Burning

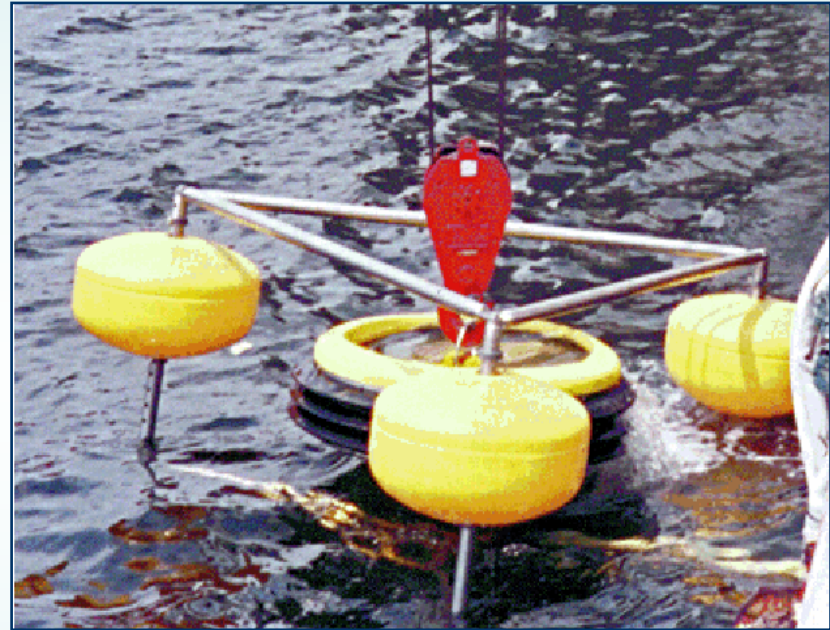
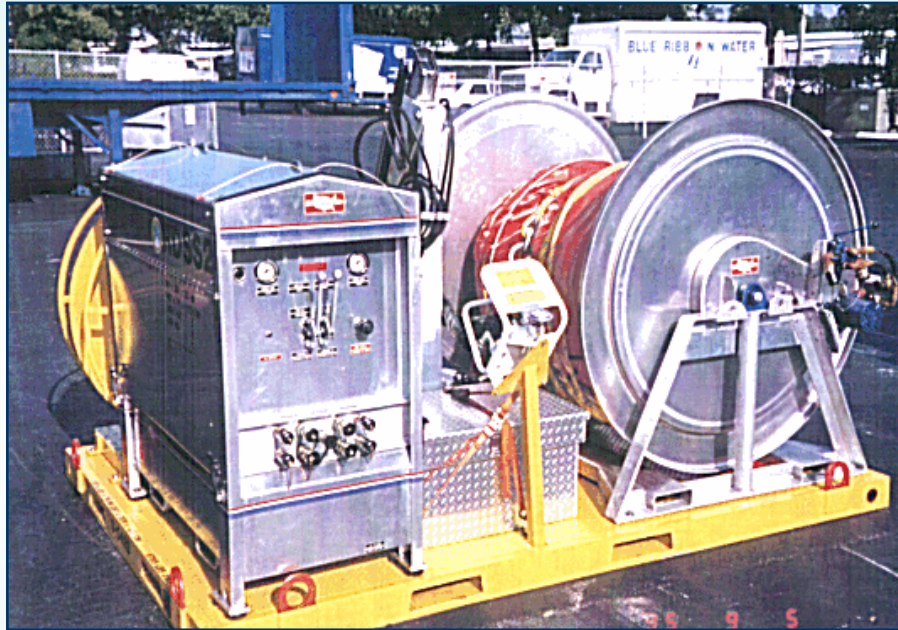


3 In-situ Burn Systems & Igniters

Containment Boom: 40,000 ft (13 km)



Mechanical Recovery



Over 40 Oil Recovery/Skimmer Systems
40,000+ bpd recovery (USCG rating)

Temporary & Intermediate Storage

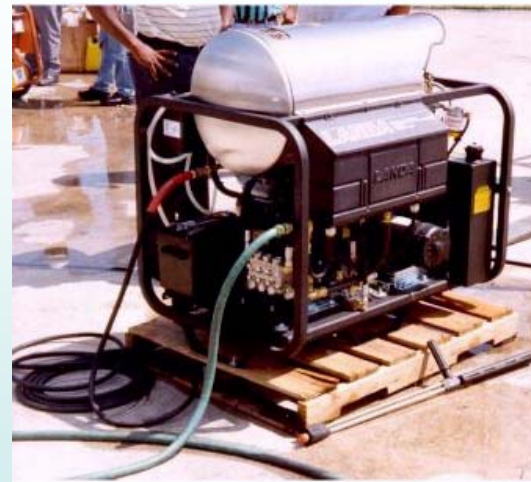
70 Towable Bladders, Tanks & Pit Liners



Sorbents



Shoreline Clean-up



Telecommunications



Wildlife Rehabilitation Center



System Components

Air Mobile Equipment
Contractor & Resource Network
Oil Spill Response Training
Drills & Exercises
Logistics & Contingency Planning
Government & Industry Liaison
Education & Advocacy
Technical Expertise
Shipping & Customs Documentation
24/7 Activation System

SAFETY



CLEAN CARIBBEAN & AMERICAS



CCA Response Protocol

Notification

Assessment

Strategy Selection

Equipment Selection

Personnel Support (Technical Advisors & Contractors)

Logistics

Finance

Coordination with Government

Integration into On-going Response

Scientific and Technical Initiatives

TROPICS

*The TRopical Oil Pollution
Investigations in Coastal Systems*

Florida Oceans and Coastal
Council

Mangrove Reforestation
Model – CCA Initiative



MOBEX

MOBEX Bahamas 1995

MOBEX St. Kitts 1998

MOBEX ESSO Bermuda 1998

MOBEX Santo Domingo 2001

MOBEX/POLMAR Martinique 2005

MOBEX Panama 2007

MOBEX Amazonia 2010





**La Préfecture de la Région Martinique
La Société Anonyme de la Raffinerie des Antilles
&
Clean Caribbean & Americas**

**International Mobilization, Preparedness & Response Exercise
(MOBEX / POLMAR 2005)**

**Vers une préparation et une intervention « coordonnées »
Towards "Integrated" Preparedness & Response**

**du 19 au 21 Janvier 2005
Hôtel Framissima La Batelière**

Nos partenaires :







MOBEX POLMAR 2005

Government Liaison

Lead Agency Contact

Contingency Planning

Sensitivity Mapping

Customs Approvals & Pre-Approvals

Dispersant Use Decision-making

In-situ Burning Decision-making

Telecommunications Approvals

Adoption of International Conventions

Equipment Selection Guide (ESG)



EQUIPMENT DIRECTORY AND SELECTION GUIDE

[Manual Equipment Selection](#)

[Retrieve Order from Archive](#)

[Response Parameters Equipment Selection](#)


[System Overview and Instructions](#)

Developed by:




Equipment Selection Guide (ESG)

COC Equipment Selection Guide



Equipment Directory & Selection Guide




[New Order](#)
[Current Order](#)
[Response Parameters Equipment Selection](#)
[Air Transport Planning](#)
[Order Summary Report](#)
[Final Order Report](#)

Equipment Directory:

- DISPERSANT APPLICATION SYSTEMS
- CONTAINMENT BOOM
- ANCHORS
- SKIMMING SYSTEMS
- TEMPORARY/INTERMEDIATE STORAGE
- SHORELINE CLEAN-UP
- SORBENT MATERIALS
- IN-SITU BURNING
- WILDLIFE REHABILITATION
- COMMAND, CONTROL, & COMMUNICATIONS
- SUPPORT EQUIPMENT
- WORK BOATS

43 Inch Inflatable Ocean Boom, 1,000 ft/305 m



Air inflatable ocean boom, 1,000 feet/305 m (in 100 foot/31 m sections) in each K-2 pallet. Overall height: 43 inches/109 cm. Accessories packaged in canvas bag under pallet cover and include air inflator, lighted buoys, and repair kit. ASTM connectors, tow bridles and tow lines included. Pallet cover serves as anti-abrasion mat.

Dimensions: 116x79x50 inches

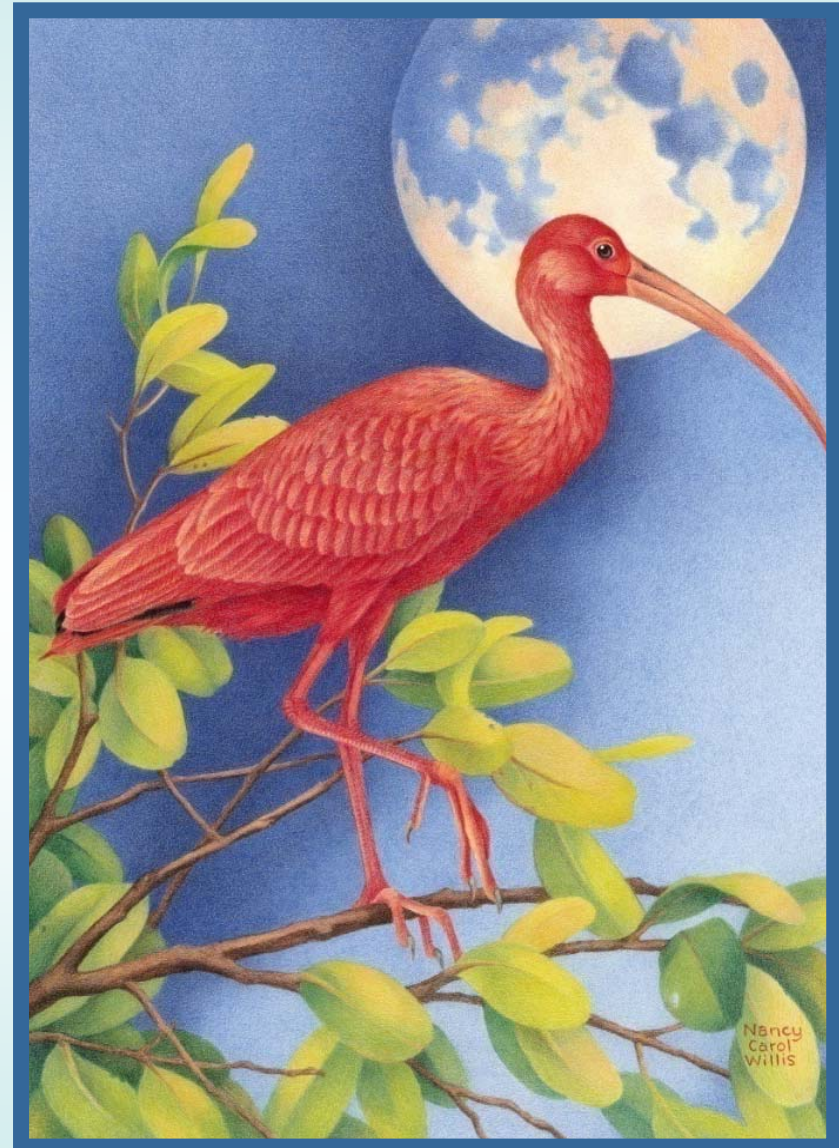
Oil Group	Group I	Group II	Group III	Group IV	Group V
Environment	Ocean	Nearshore	River		

Serial No.	Total Available	Unit Price	Air Cargo Positions	Weight (lbs/kgs)	
B-125, B-125A	6	\$36,994	1.00	4964 / 2252	ADD TO ORDER



Merci Beaucoup

Thank You



Education & Advocacy

International Petroleum Industry Environmental Conservation Association (IPIECA)

United Nations Environment Program (UNEP)

National Navies & Coast Guards

International Maritime Organization (IMO)

American Society for Testing & Materials (ASTM)

Asistencia Reciproca Petrolera Empresarial Latinoamericana (ARPEL)

Association of Petroleum Industry Co-op Managers (APICOM)

Global Response Network

Industry Technical Advisory Committee

International Tanker Owners Pollution Federation (ITOPF)

Nova Southeastern University Oceanographic Institute